

Safety is no Accident

Put a stop to premature driveaways

SafeLoader is key

Simple, effective, innovative solution to accidental driveaways from loading bays

Call us on: +44 (0)161 429 1580

Visit: www.maplefleetservices.co.uk

SAFELOADER

MAPLE
FLEET SERVICES



Safety First

The transport sector is widely regarded as one of the most dangerous industries in which to work. Given the various risks and variables that exist on our roads this is of little surprise.

But perhaps what is more shocking is that one of the most high risk areas for transport personnel is the depot and more specifically the loading bay - according to the HSE 'loading & unloading is the highest risk activity for many businesses.'

Accidents during loading and unloading account for 15% of all workplace transport accidents, whilst this figure can rise to as high as 30% in some quarters.

Perhaps the most serious and dangerous risk posed is that of premature driveway's - when a vehicle pulls away from it's bay before loading has been complete, placing the loading personnel at huge risk.

Simplicity is Key

SafeLoader has been developed in conjunction with respected industry professionals, as such the design has been engineered to provide simplicity from start to finish and a workable solution in the field.

The driving force behind SafeLoader was to transfer the decision to depart the loading bay away from the driver and place it in the hands of the loading team. Not only are the loading team most at risk from injury but they are also the very individuals who know when the vehicle is ready and cleared for departure.

SafeLoader consists of a pneumatic valve connected to a vehicle's brake lines. Once the vehicle is docked at the loading bay, a bespoke key is used to activate the SafeLoader valve, effectively shutting off the air flow and temporarily removing the operation of the trailers brakes from the driver until loading has been complete.

Even in the event of an attempted departure the driver will be physically unable to move the vehicle until loading is complete and normal functionality is restored to the vehicles braking system.

SafeLoader - The Solution



1. Trailer reverses onto the loading bay.



2. SafeLoader is operated with specially designed key, housed on the loading bay.



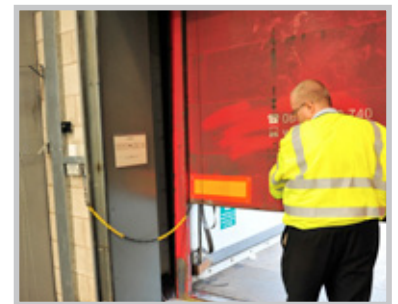
3. Loader inserts the key into the vehicle mounted SafeLoader valve.



4. With the key in position, air to the brakes is blocked & vented from the brake chambers.



5. Trailer brakes are now applied & the driver cannot move the vehicle. Loading can commence.



6. The key is connected by a chain to the depot, acting as an interlock so the door cannot be closed until the key is removed.



7. With loading complete the key can be removed and returned to the wall mounted bracket.



8. Normal braking functionality is returned, the vehicle can depart.



“Simple, cost effective and efficient, SafeLoader was praised for putting the decision (to depart the loading bay) in the hands of the loading personnel rather than the driver, which means runaway’s cannot theoretically occur.

A good idea, workable, and with the potential for industry-wide take up.”

Motor Transport Judging Panel Comments regarding SafeLoader



Maple Fleet Services, no one comes close

Call us on: +44 (0)161 429 1580

Visit: www.maplefleetservices.co.uk

SAFELOADER

MAPLE
FLEET SERVICES