



Safety & Security Solutions for the Logistics Industry

Product Overview



70%

of drivers have witnessed a trailer coupling accident or near miss

200k

commercial vehicles and their cargo are stolen each year in Europe

OVER 50%

of thefts are attributable to a company's own employees

€8 BILLION

The cost of European Freight Crime

49%

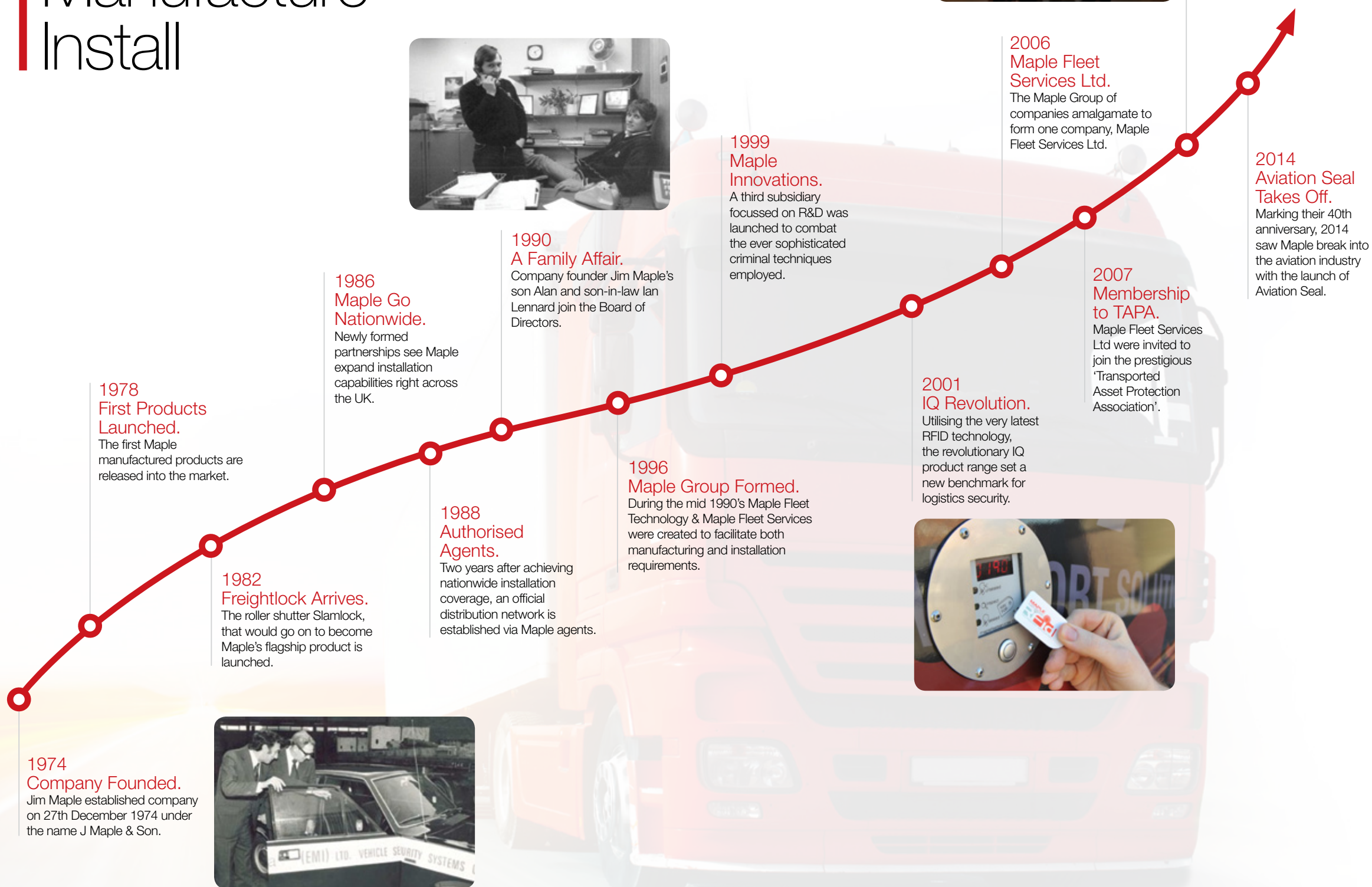
of cargo crime involves the theft of goods from a trailer

Contents

- 04 Introduction
- 06 Alarms
- 08 Immobilisers
- 10 Van Locking Solutions
- 12 Shutter Door Locking Solutions
- 14 Barndoor Locking Solutions
- 16 Premium Security Solutions - Insight IQ
- 18 Safety Solutions
- 20 Installation Services
- 22 Aviation Seal
- 24 Bespoke Design Service



Design Manufacture Install



Introduction

Maple are a solutions led company, specialising in the design, manufacture and installation of safety and security applications for the logistics industry. Founded in 1974 by Jim Maple, the company has earned a reputation for engineering excellence, innovative design and practical product solutions.

From humble beginnings in the garage of Jim's family home, Maple has expanded to an international operation, working with a wide cross-section of organisations from independent carriers through to global blue-chip companies in an effort to improve their logistic operations.

We have retained the dedication and personnel touch you would expect of a family-led business whilst building an R&D led approach to ensure we remain at the forefront of the industry, continuing to launch new safety and security solutions across the multimodal platform.

The philosophy of our organisation can be found in the passion for engineering and design exemplified by our innovative product range through to the highly skilled mobile installation team that provide extensive 24/7, 365 days a year coverage. Over four decades we have demonstrated an unquenchable thirst for engineering excellence, from our sophisticated high security IQ Insight locking range to life-saving trailer safety valves, with Maple – no one comes close.

Functional Goods in transit Versatile

Alarms

When it comes to protecting a commercial vehicle against the risk of attack or theft, Maple alarm systems deliver a fundamental level of security and peace of mind.

Maple have a longstanding history in providing high quality commercial vehicle alarms. We are recognised as one of the worlds first to develop a microprocessor controlled alarm for a commercial vehicle during the early 1980's. This innovative approach towards crime prevention remains a cornerstone of our organisation to this day, keeping the Maple name at the forefront of the commercial vehicle security sector.

Alarms

Thatcham Category 2-1

Utilising the original equipment manufacturers (OE) immobiliser, this insurance approved alarm range will upgrade the security level of your vehicle to a Thatcham category 1 level.

Suitable for use on a range of light commercial vehicles this security alarm can be supplied with separate remotes or alternatively interfaced and controlled by the existing remote controlled central locking, an excellent entry level alarm.



Acer Red

Acer Red is a high specification van and truck alarm system. Available for both 12 & 24v vehicles, the Acer Red boasts a plethora of programmable features as standard.

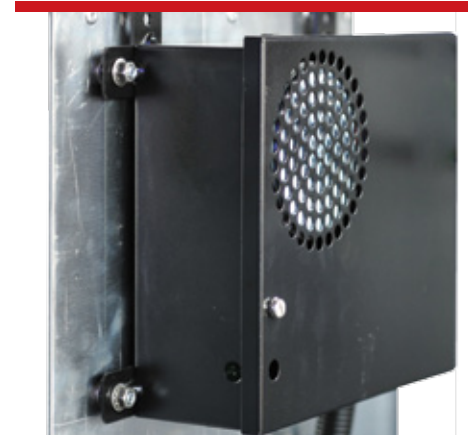
An ideal upgrade for OEM factory fitted equipment the Acer Red includes passive arming, split zoning, silent arm/disarm and a three circuit immobilisation mode. The system is controlled with the use of a battery-free coded transponder that is simply presented to an external antenna mounted by driver & load area doors. Lost or stolen transponders can be deleted and replaced within just a few seconds to maintain vehicle security.



PS25

The PS25 Load Alarm is a self-powered, goods in transit truck and trailer alarm system, which has been specifically designed for the commercial logistics market.

The application is available for both 12v and 24v vehicles and features a failsafe battery backup, so that in the event that the vehicle's power is cut the PS25 security system will remain armed and active. Once triggered the 122 decibel siren will attract attention from the surrounding area and disorientate a persistent offender.



Immobilisers

KeyOut

For operators who may need to leave the engine running for prolonged periods of time in order to power ancillary equipment, this can often present something of a dilemma. On the one hand leaving the engine running, with keys in the ignition can present both a security and health & safety breach; whilst on the other switching the engine off will inevitably lead to flat batteries.

KeyOut offers the ideal solution, enabling users to leave their vehicle with the engine running and remove the keys from the ignition to preserve security, in the event an unauthorised attempt is made to move the vehicle, the engine will immediately stall.



Anti-Hijack

Over recent years there has been an alarming trend in the number of violent hijackings. Such scenarios are difficult to guard against, as the nature of the attack can vary in its modus operandi, ranging from deception to assault.

Maple have developed a solution that not only protects your assets but also safeguards your driver. The Anti-hijack solution encourages the driver to relinquish control of the vehicle without endangering themselves further. The system, which can be triggered by door openings (with the engine running) or even set remotely, will then slowly limit the vehicle performance before reaching a near standstill.



DriveLock

DriveLock is an intelligent, driver recognition immobiliser allowing operators to benefit from substantial safety and security advantages.

The system has been specifically designed for users who are required to leave a vehicle unattended with the engine running and the keys in the ignition, but want peace of mind that unauthorised persons cannot operate the vehicle. The system is completely passive, meaning that providing the operator is wearing the DriveLock transponder the vehicle can be used as normal. In the event that an unauthorised person attempts to move the vehicle, the engine will stall and horn will sound.



Immobiliser

Maple are recognised as one of the pioneering companies behind anti-hijack and immobilisation applications for the commercial vehicle market.

Whilst basic immobilisers have now become standard on most commercial vehicles, Maple continue to set the bar, with a diverse range of immobilisation and anti-hijack applications. A comprehensive range of products adopted by a variety of end users, from municipal waste collection teams to high value logistic carriers.

Whether you require the ability to immobilise a vehicle whilst the engine continues to run, in order to power auxiliary equipment, or need to protect your driver against a hijack situation, Maple have the answer.

Driver Recognition Passive Intelligent

Robust
Diverse
Pioneering

Van Locking Solutions

Maple have been providing high quality security solutions for panel vans since the company was first established in 1974. Our wealth of experience matched with an ability to understand the varying requirements of our clients, has allowed us to develop a comprehensive portfolio of van locking applications.

Whether you are a sole trader looking to protect your livelihood, or a multi-vehicle operator who requires the ability to remotely access and lockdown your entire fleet with just the click of a button, Maple have the right solution for you.

Van Locking Solutions

VanGuard Deadlock & Slamlock

The VanGuard range has long been a staple of the Maple product portfolio, offering a cost-effective and durable weapon against commercial vehicle crime.

We are proud to have played a key role in the development and origination of Slamlock technology, a significant landmark for an industry that had become increasingly concerned by the rising trend of opportunist theft. VanGuard Slamlocks, together with our Deadlock range, which offer a robust and substantial level of security for a modest cost, remain a popular and effective vehicle security measure.



ActivLock Range

The ActivLock range of products offers a versatile electronic Slamlock, that can be tailored to suit individual operator requirements. In its standard form, ActivLock converts the existing central locking to an automatic Slamlock, operated by the OE remote.

For enhanced security options, ActivLock can be supplied as a completely independent transponder controlled Slamlock, ensuring any breach of the vehicles existing security, such as copy or cloned keys, will not compromise the integrity of the load area. An additional high security shoot-bolt can also be specified to provide heightened protection and repel more aggressive, sustained attack.



LCV FreightLock

A heavy-duty, robust locking solution operated via its own dedicated air compressor, FreightLock is reserved for carriers of high-value, sensitive loads – offering the highest level of security for a panel van within the Maple product range.

The solution can be integrated with the IQ Insight control platform, providing detailed information as to who, when and where vehicles have been accessed. For the ultimate in access control and load integrity, operators can even opt to lock vehicles remotely, ensuring load areas can only be accessed under controlled conditions.



Shutter Door Locking Solutions

Shutter doors remain a popular and convenient choice for a variety of logistics operators. Our diverse range of locking solutions cater for varying requirements, from simple mechanical externally mounted locks, to sophisticated air operated access control solutions such as our industry leading FreightLock.

Embracing both existing and emerging technologies to drive operator efficiency, our range of ever evolving security applications are designed in consultation with leading industry figures to ensure we continue to deliver relevant, world renowned security solutions.

Reliable
Industry Leading
Secure

Shutter Door Locking Solutions

SlamSecure

The key operated SlamSecure, compatible with the popular Whiting shutter door handle provides a robust and user friendly locking solution for commercial vehicle operators.

In common with all shutter door locking solutions in the Maple range, SlamSecure provides a convenient Slamlock operation, whilst its ease of use, installation and reliability has seen the system transported around the world where it has found favour with a diverse range of end users.

An exterior mounted security device, SlamSecure provides a high impact visual deterrent and is manufactured from the highest quality materials to ensure efficient performance in the most challenging and extreme operating conditions.



Shutter Door FreightLock

The Maple FreightLock is an air operated heavy duty Slamlock specifically designed for shutter doors. With more than 30 years proven field service operation, FreightLock is still recognised as the best heavy duty security lock of its type on the market to date.

The nucleus of FreightLock is of course security. Each and every component is manufactured from the highest grade materials, which are in turn installed within the load area to further protect against attack. FreightLock is engineered to withstand prolonged periods of attack, with countless examples of where it has thwarted even the most determined of perpetrator, maintaining the integrity of a vehicles load.

Operated pneumatically for reliable and consistent performance, FreightLock employs a single Slamlock operation to ensure that if doors are closed, they're locked. Convenience of operation extends further with flexible methods of control including mechanical key, battery-free programmable transponders (helping to avoid problems of lost or stolen keys) through to our sophisticated access control Insight IQ platform, to provide the ultimate goods in transit security solution (see page 16).



Barndoor Locking Solutions

Cargo crime is big business, the theft of high-value, sensitive products within the European supply chain is in excess of € 8.2 billion a year. Arguably goods are at their most vulnerable during transit, with the threat of opportunism and highly organised, targeted criminal gangs looming large.

Protecting assets against this ever-present threat is crucial for any logistics operation. Our specialist range of barndoor solutions are suitable for rigid vehicles, trailers and container bodies. Many of our most popular applications feature a Slamlock action, whilst our engineering led approach ensures each and every lock is designed to offer convenience and driver friendly operation without ever compromising on security. Locking is in our DNA, quite simply it's what we do.

Protection
Unique
Convenience

Barndoor Locking Solutions

SlamSecure

SlamSecure is an externally mounted application that converts traditional style 'throw over' door handles to a Slamlock action.

Our entry level locking solution is designed to replace padlocks and other basic locking systems that are difficult to administer and are vulnerable to misuse. A reliable, mechanical system that provides an immediate visual deterrent, SlamSecure combines the convenience of a Slamlock with the reassurance of a durable, physical restraint.



ProLock

The latest innovation to the Maple locking range, ProLock, is designed for use on flush-mount barndoors, developed to meet the rapid growth in sectors such as the home delivery market, where vehicles with this door type are becoming increasingly popular.

The high-security locking mechanism, usually specified at both the top and bottom of the door features Slamlocking functionality with iButton access control. Uniquely, ProLock enables emergency access via securely controlled pin numbers, in the event that keys are lost, stolen or even accidentally locked inside, these one-time use PIN numbers provide temporary access.



Barndoor FreightLock

With more than 30 years of operational service, FreightLock is Maple's original and most popular locking solution within the entire portfolio.

A heavy-duty, non-solenoid door-lock, operated pneumatically by utilising the vehicle or trailers own auxiliary air supply, Barndoor FreightLock features high specification locking bolts that fire automatically upon door closure. All of the main components are mounted within the load area for maximum protection, whilst the system can be controlled with either transponder or via the Insight IQ platform (see page 16).



Electronic Sealing Remote Lockdown Accountability

Insight IQ

Traditionally, the weakest point in the supply chain has been the moment your vehicles and their cargo depart the relative safety of the depot. Control, visibility and security are all relinquished, with valuable loads exposed and vulnerable.

With Insight IQ, the ultimate Goods in Transit Security solution, you can now regain control adding value and integrity to your logistics operations. A complete end to end security platform, bringing together industry leading vehicle locks, electronic tamper evident seals and remote access control; Insight IQ enables you to control when load areas can be accessed, by whom and even where, allowing you to identify any security breach quickly and easily.

Insight IQ



Load Integrity

It is inherently difficult to identify and prove when and where the loss of goods occurs. It can leave questions unanswered, was the vehicle locked? was it sealed? what was the seal number? Who was the last person to access the vehicle, when and where? With Insight IQ all of this ambiguity simply disappears.

Combining high security locking solutions with electronic sealing and access control provides you with a comprehensive load integrity solution - every single door activity is logged with a date and time stamp - no more uncertainty, no grey areas, just fact.

Remote Access Control

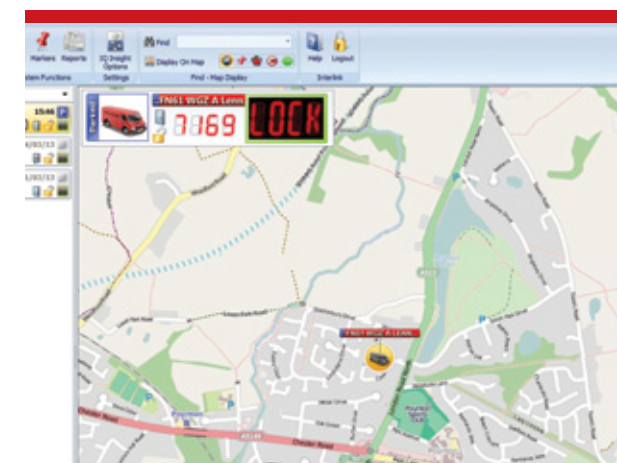
Insight IQ provides operators with the ultimate load protection security system. With just the click of a button it allows you to remotely lockdown your vehicle once it is ready for departure, from anywhere in the world. This means that even authorised personnel, who hold an active keyfob will be unable to gain access to the load area once it has been sealed and placed in to lockdown.

Once your vehicle has arrived at the authorised destination, access can once more be enabled (to authorised personnel).

Accessibility

We understand the implications of late or missed deliveries and the importance of accessing your load the moment it's required.

That's why Insight IQ has an Emergency Access feature incorporated into the system. In the event a GSM or GPS signal is not available or a keyfob has been lost, stolen or locked inside the vehicle, access can be gained by entering a secure, one-time use emergency access code.



Bespoke Simple Revolutionary

Safety Solutions

With an estimated 730,000 casualties on our roads every single year, the road transport industry is widely regarded as one of the most hazardous in which to work. But this perilous environment is not reserved to the road, the depot and the loading bay present their own dangers, with potentially severe consequences.

From the chaos of a busy loading bay to the coupling and uncoupling of a trailer – a moments lapse in concentration can be the difference between life and death. Our award winning range of innovative vehicle safety solutions has been designed to enhance your own health & safety policies whilst maintaining efficiency.

Safety Solutions

SafeConnect

Rollaway and crushing incidents whilst coupling tractor and trailer units are an industry wide problem. With the potential to cause large scale damage, personal injury and even fatalities, these accidents are often caused by failure to correctly apply the tractor handbrake and/or the trailer park brake.

SafeConnect restricts air flow between the tractor and trailer units during the coupling procedure, ensuring that the brakes remain applied throughout the entire process. Only once the driver returns to the safety of their cab and depresses the foot brake will the vehicle's brakes be released, thus ensuring that the vehicle is under full control at all times.

In addition to the standard SafeConnect application, vehicles equipped with EBS (electronic braking stability) can also utilise an electrical solenoid. This optional extra ensures the vehicle cannot be moved until the EBS has been correctly applied, enhancing operators health and safety procedures further.



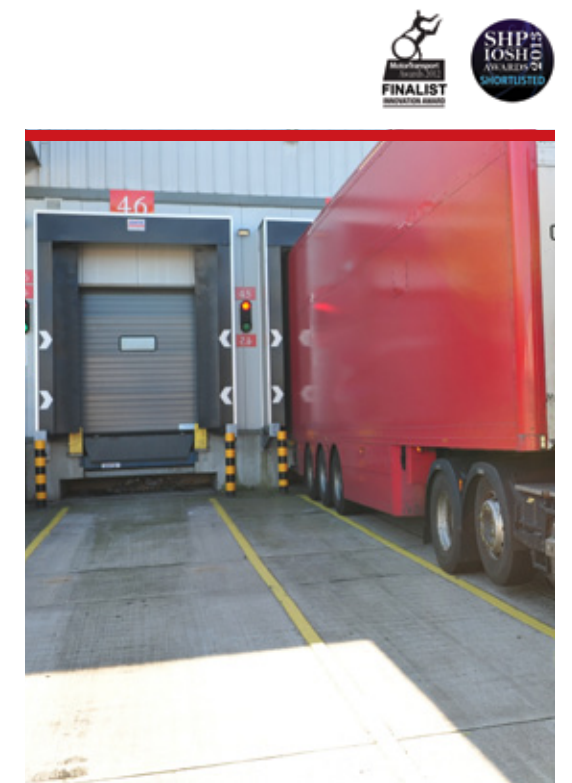
SafeLoader

Loading and unloading is one of the highest risk activities that logistics companies undertake. A staggering 15% of all workplace accidents are attributed to this very task and this can rise to as high as 30% within certain sectors.

With pressure on quick turnarounds and ever decreasing delivery windows, the loading bay can be a particularly hazardous and dangerous environment, where just a momentarily lapse in concentration or miscommunication can easily contribute to a premature driveaway.

SafeLoader is a key operated pneumatic valve positioned in the load area of a vehicle. On arrival at the bay, the loading personnel simply insert a specially designed key into the valve, which in turn applies the trailers brakes. In the event that the driver attempts to depart, the vehicle will remain stationary. Only once the key has been removed will normal braking functionality be restored, thus allowing a safe departure.

SafeLoader's success lies in its simplicity; by granting those who are most at risk with the decision to depart, this innovative safety solution could eliminate premature driveaways, once and for all.



Professional
Responsive
Experienced

Installation Services

At Maple we understand and value the importance of high quality workmanship, which is why from day one we have strived to achieve technical excellence in support of our clients in the field.

So strong is our conviction, that we played a key role in the creation of the code of practice for installation and security on HGV's that was adopted by the VSIB (Vehicle Security Installation Board). Furthermore, our founder Jim Maple went on to chair the MESF (Mobile Electronics & Security Federation); reinforcing Maple's status as the mark of quality by which commercial vehicle security and installation is set.

Installation Services

Skilled Engineering Team

All of our mobile engineering team are trained motor vehicle technicians to a minimum City & Guilds standard and have completed the Mobile Electrical Certification program. We regularly assess our technicians to ensure their training on a diverse range of products is up-to-date and relevant.

To ensure our own exemplary standards are always maintained, our engineers are independently monitored. This means that any engineer, at any time, can receive a visit from an assessor on an active assignment for a thorough, independent inspection of their work.

24/7 Nationwide Service

Our nationwide team of highly skilled engineers, strategically positioned throughout the country, are uniquely placed to offer our customers a genuine 24 hours a day, 7 days a week, 365 days of the year service – that's our promise to you.

Each and every vehicle on our fleet is fully equipped with a host of spare parts and serviced with an overnight delivery service, to ensure we can fulfil all jobs in a single visit wherever possible.

3rd Party Installation Service

Maple also support a host of 3rd party products in the field. From one-off installations to multi-fleet installs, Maple have the scalable resources to meet the demands of any vehicle installation project.

From partsflow to scheduling, installation to completion reports – our vast industry experience allows us to co-ordinate the entire process, with in house capabilities that will see Maple manage your project every step of the way.



Aviation Seal

For commercial airlines the integrity and security of their supply chain is paramount. Whether it's ensuring unauthorised foreign objects cannot infiltrate their infrastructure or preventing the theft or loss of goods from within, it is imperative that control and visibility is never compromised.

Nobody understands the complexities of such high security operations like Maple. Since 1974, we have been supplying access control, load integrity solutions to the logistics industry. In consultation with aviation specialists Maple have developed a lockable seal that can be utilised across various containers and trolley applications. This innovative security range has met with much acclaim by a very receptive audience and is approved for use by the Civil Aviation Authority.

Innovative Accountable Controlled

Aviation Seal

Integrated Access Control

Designed to combat the huge problems associated with theft from catering trolleys and duty-free carts, Aviation Seal is an integrated locking and sealing application, providing a comprehensive audit trail throughout the transportation of the unit. Created with simplicity in mind, the application is operated via the use of an iButton key incorporated into existing ID badges, allowing the container to be locked and sealed in a matter of seconds.

High Security

Comprising of an intelligent sealing module and self-contained locking unit, Aviation Seal has the ability to record and store a complete list of activities, such as when the door was opened and closed, by whom and when the unit was sealed or unsealed. This data can then be downloaded and viewed through a bespoke website, providing users with an unparalleled level of accountability over their assets.

User Friendly

Developed with efficiency in mind, the entire application is controlled via a single activation button and five digit LCD display located on the front of the control module. To operate the system, users simply press the activation button and present their iButton to the reader, which depending on the status, either releases or applies the dual seal/lock. In the unlikely event of forced, unauthorised access, the seal number will disappear to be replaced with the 'broken seal' message.

Authorised Personnel

In order to retain the highest levels of security and accountability throughout the supply chain, authorised personnel can be issued with their own unique iButton keys and can even be programmed to access specific trolleys, groups or all units. The flexible user software also allows operators to programme certain days and times of operation, expiry dates and even issue and delete users so security protocols can be maintained at all times.



Unique Design Research & Development Consultancy

Bespoke Design Service

Engineering Solutions

As an engineering led company, Maple pride themselves on providing high quality, award winning and unique product solutions. Yet with more than 4 decades of experience working with the logistics industry, we are also well versed in the varying requirements of an eclectic mix of operators, which is why we offer a bespoke design and consultancy service for clients dedicated to improving their operational efficiencies.

Championing Innovation

For more than 40 years, Maple have championed innovative design, it is ingrained within the company's philosophy. We employ a dedicated team of mechanical, technical and electronic design engineers who have the capabilities to take your requirements and transform them into concepts, prototypes and full scale production items. Our state of the art in-house R&D facility allows us to control all aspects of our client's requirements and means we remain reactive to the ever changing industry of commercial logistics.

Whether providing more secure locking solutions for commercial vehicles or designing integrated mobile access control solutions for commercial airlines, Maple have the capabilities to translate your brief into a market ready solution.

Design Capabilities

Drawing on our experience and expertise within mechanical, electrical and pneumatic fields, Maple posses the technical knowledge and resource to deliver bespoke design projects on time and on budget.

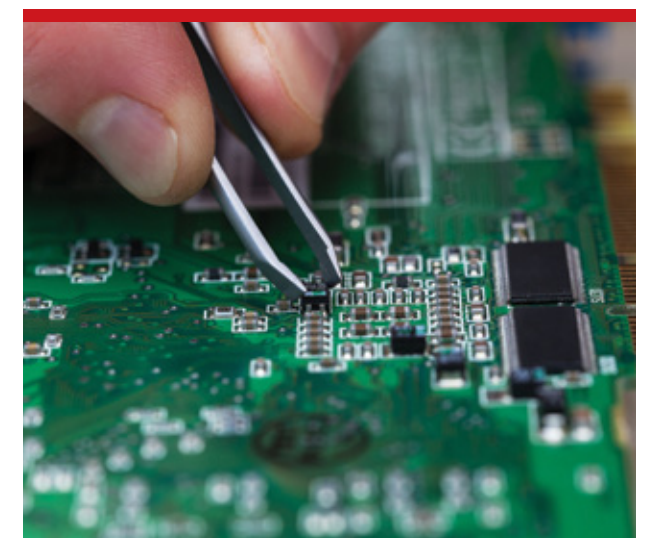
From concept to prototype, manufacture to support, Maple will manage the entire design process, engaging with you throughout to develop a solution that can be engineered around your exacting requirements.

With Maple, no one comes close.

Bespoke Design Service

When Jim Maple founded the company back in 1974, it was a passion for engineering design that was at the forefront of driving the business forward and has remained integral to everything that we do ever since.

We continually strive to develop new and exciting products for the logistics industry, in addition to this we also welcome and support bespoke design projects. With full in-house R&D capabilities, we have worked closely with a wide ranging portfolio of clients to help develop ad hoc solutions to safety and security challenges for which there is a lack of viable solutions.



Notes

31.5 MILLION
commercial vehicles on European roads

24% ANNUAL
increase in reported cargo crime incidents

1%
of organised crime proceeds
are recovered or confiscated

€55,670,000
annual combined cost of top 10 cargo theft

40 YEARS
Maple have been supplying
safety & security solutions



MAPLE

Call us on (0)161 429 1580
Visit maplefleetservices.co.uk

Maple Fleet Services Ltd
Maple House
Crown Royal Industrial Park
Shawcross Street
Stockport
SK1 3EY
UK

Maple - no one comes close